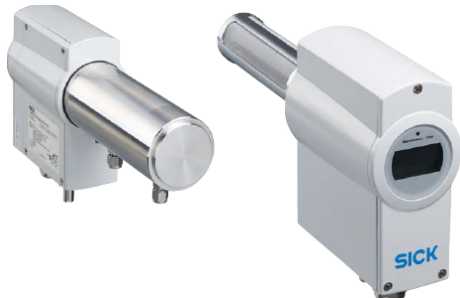


ORIGIN

INSTRUMENTS & ANALYTICS

SOLUTIONS FOR

- PROCESS GAS ANALYTICAL
- EFFLUENT TREATMENT
- ENVIRONMENTAL/AAQMS
- METEOROLOGICAL INSTRUMENTS
- PROCESS INSTRUMENTATION
- IOT APPLICATION DEVELOPMENT
- AMC'S & ARC'S
- PORTABLE FLUE GAS ANALYSER



**GM35
IN-SITU IR GAS ANALYZER**
SIMULTANEOUS OR INDIVIDUAL MEASUREMENT OF
CO₂, H₂O AND CO OR N₂O

**TRANSIC100LP
LASER OXYGEN TRANSMITTER**
The good nose for oxygen

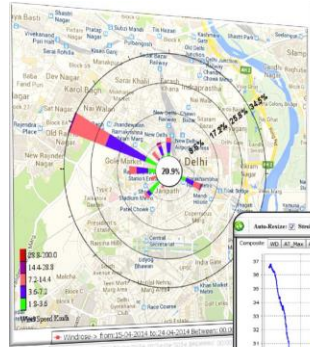


Visit us at: www.origininstruments.in

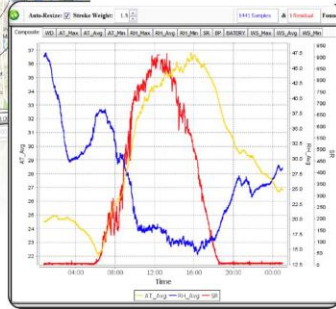
Email: info@origininstruments.in / originservicesgrp@gmail.com

METEOROLOGICAL INSTRUMENTS

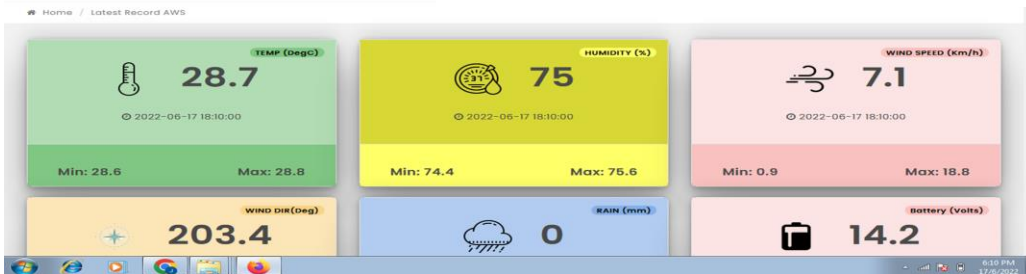
- WIND DIRECTION
- WIND SPEED
- RAIN FALL
- AMB TEMPERATURE
- RELATIVE HUMIDITY
- BAROMETRIC PRESSURE



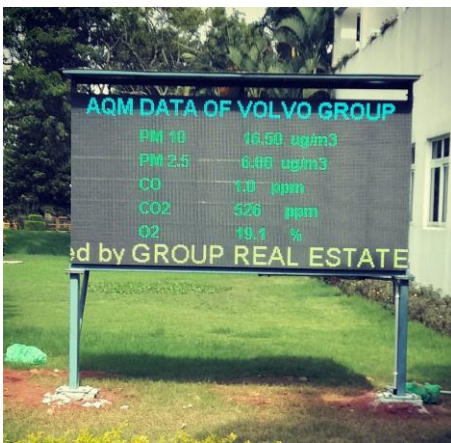
Windrose, Diurnal Trends, Met-Statistics, Export Data to MS Excel...



ONLINE NOISE MONITOR



WITH ONLINE LIVE DATA THROUGH WINSTATE PRO SOFTWARE AND WEB PORTAL ANY WHERE ANY TIME



AAQMS DISPLAY BOARD



PIEZOMETERS



PORTABLE PM 10/2.5 meter

FA 500 - Dew point sensor from -80 to 20 °Ctd

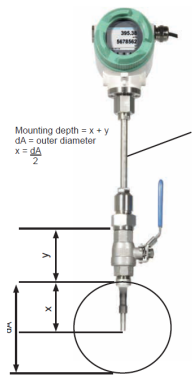
FA 500 is the ideal dew point measuring instrument with integrated display and alarm relay for refrigeration, membrane and desiccant driers.



Special features:

- Integrated display
- Threshold value adjustable via keypad alarm relay (max. 60 VDC, 0.5 A)
- Pressure-tight up to 350 bar (special version)
- Extreme long-term stability
- Quick response time
- 4...20 mA analog output
- 2 versions: Refrigeration driers and desiccant driers
- NEW: Modbus-RTU interface
- NEW: Higher resolution of sensor signal caused by the improved evaluation electronics
- NEW: Sensor diagnosis on site with a portable device or CS Service Software

Easy mounting/dismounting of VA 550 under pressure - without disconnection of the line - without emptying the line



Engraved depth scale for precise installation

180
170
160

If there is no suitable measuring site with 1/2" ball valve there are two simple possibilities to set up a measuring point:
A Weld on a 1/2" screw neck and screw on a 1/2" ball valve
B Mount spot drilling collar including ball valve
 By means of the drilling jig it is possible to drill under pressure through the 1/2" ball valve into the existing pipeline. The drilling chips are collected in a filter. Then the sensor can be mounted.



Order no.: 3300 0006



Order no.: see page 86



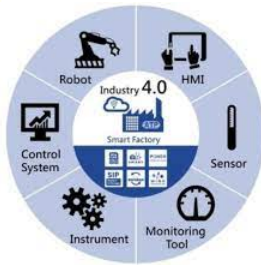
Order no.: 0530 1108



KILN RETRACTION SYSTEM FOR CEMENT PLANT



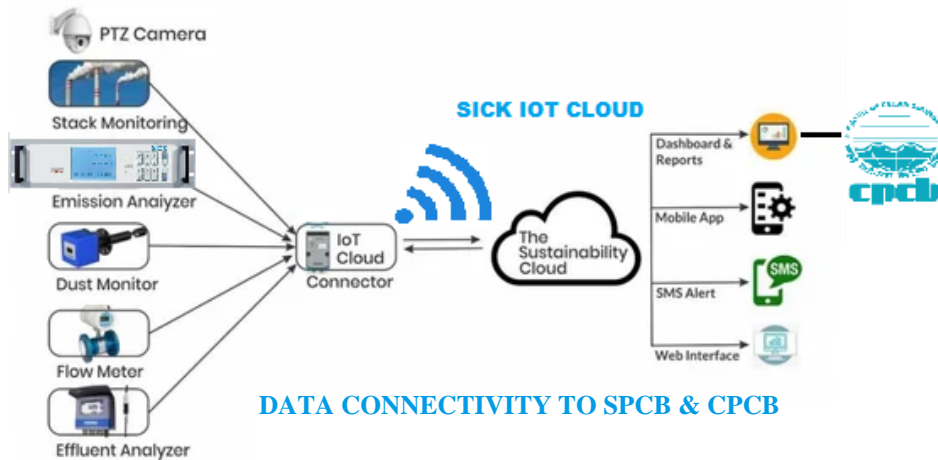
ORIGIN SMART FACTORY INDUSTRIAL IOT SOLUTIONS



Industrial IoT

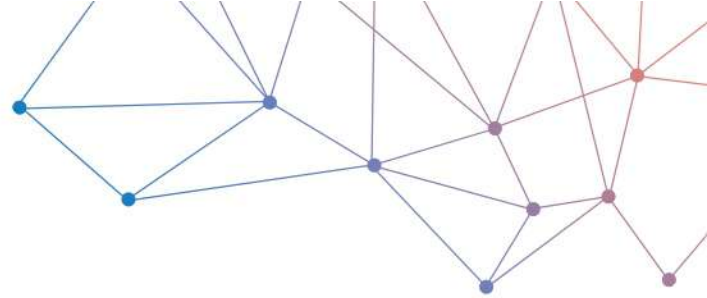


PROCESS INSTRUMENTS/ MEASURING SYSTEMS/ SENSORS/ REPORTS/ MIS THROUGH CLOUD



DATA CONNECTIVITY TO SPCB & CPCB

SICK
Sensor Intelligence.



DATA SHEET

Si-CA 230

Gas Analyzer for Emissions Monitoring of Boiler, Engine, & Other Combustion Applications

Accurate / Reliable / Robust / Innovative



Note: Phone not included.



Up to Six Gas Sensors. Can include O₂, CO, NO, Low NO, NO₂, Low NO₂, SO₂, Low SO₂, H₂S, and CxHy



CO Dilution auto-range with measurements to 50,000 ppm



Large Color Touch Screen



Total NOx & Low NOx Capable



iOS and Android Mobile Apps Real-Time Display & Control

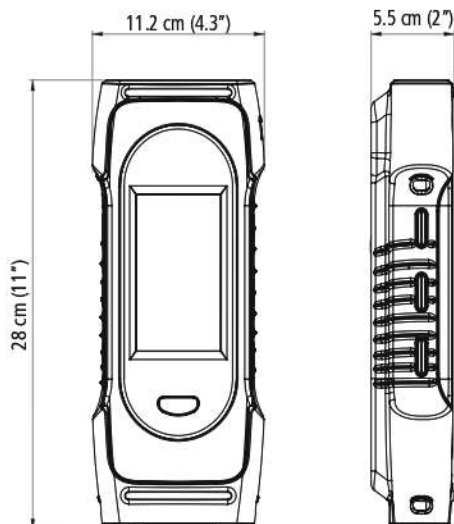


Field Replaceable Pre-Calibrated Sensors

- Ergonomic, light weight, & durable design
- Data management with automatic logging & report creation
- Predictive maintenance with estimated sensor life & calibration reminders
- One touch pump On/Off with purge
- PC software with wireless and USB connectivity
- Auto pump cut-off for high CO levels
- Graphical data display
- Customizable gas analysis screen

- Sample conditioning unit for low NOx & high moisture applications
- Stack gas velocity with Pitot tube
- Draft & differential pressure measurements
- Emissions values adjusted for reference O₂
- CO & CO₂ Monitoring in Ambient Air
- Hose extensions for tall & difficult to reach stacks
- Wireless Printer
- Protective rubber holster

Dimensions



Thermo-anemo-manometer
MP 210



KEY POINTS

- Measurement of pressure, air velocity and airflow
- Interchangeable modules
- 2 inputs for Pt100 temperature (from -200 to +600°C)
- Up to 6 measurements simultaneously
- Large graphic display

CONNECTIONS

Interchangeable measurement modules

1 device = several possible ranges and parameters

Wireless connection

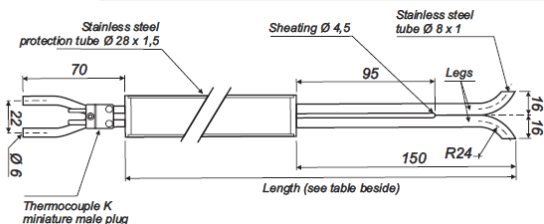
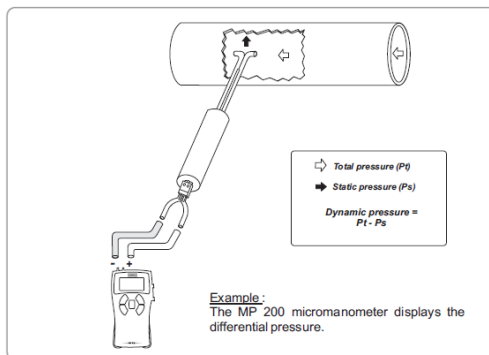
Device/probe wireless connection

SMART-2014 system

Wireless and wired probes automatically recognized



• Pitot tubes type S with TC K



MP 210 P : MP 210 + MPR 500 pressure module (±500 Pa pressure module)

MP 210 M : MP 210 + MPR 2500 pressure module (±2500 Pa pressure module)

MP 210 G : MP 210 + MPR 10 000 pressure module (±10000 Pa pressure module)

Modules with 2 pressure connectors Ø 6.2 mm made of nickelled brass and 1 thermocouple input.

MP 210 H : MP 210 + MPR 500 M pressure module (±500 mbar pressure module)

MP 210 HP : MP 210 + MPR 2000 M pressure module (±2000 mbar pressure module)

Modules with 2 pressure threaded connectors Ø 4.6 mm made of nickelled brass and 1 thermocouple input.

The new probes use a mini-DIN cable unique and pluggable that fits on every probes. This cable is supplied with each instrument. The instruments are supplied in a transport case with a calibration certificate, a charger and a USB cable.



OCEMS

EFFLUENT MONITORING



- PH / ORP Analyzer**
- ❖ PH/ORP Indicator / Transmitter/Controller
 - ❖ 2-Line, 16-character Back-lit Display
 - ❖ Measuring range pH : 0-14pH
 - ❖ Accuracy : +/-0.01pH
 - ❖ Resolution : 0.01pH
 - ❖ Measuring range ORP : +/-2000mV
 - ❖ Accuracy : +/-2mV
 - ❖ Resolution : 1mV
 - ❖ Output 4 -20mA with Relay Output/ RS485/HART
 - ❖ Mounting : Panel / Field
 - ❖ Temperature Compensation as Optional
 - ❖ MOC : Glass, ss316L

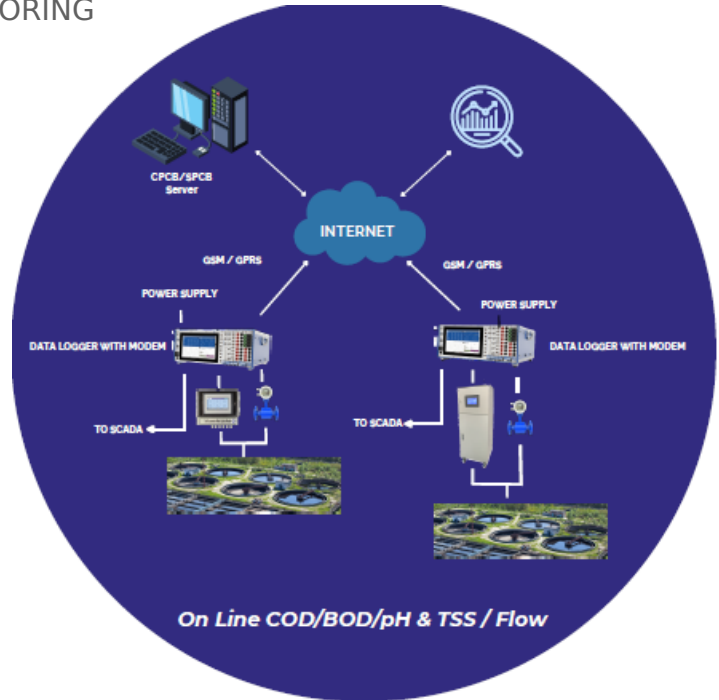


- Turbidity Measurement in Liquids, Solids**
- ❖ This is only the color independent Measurement
 - ❖ Measuring Range: 0.001-4000 NTU in Liquids, 0.001-50 g/L in Solids
 - ❖ Self-Cleaning System is Available as optional
 - ❖ Temp. & Pressure: 0- 40oC & Max. 6Bar
 - ❖ MOC of Sensor : PVC / SS316L
 - ❖ Output 4-20 mA / Relay / PID etc.,
 - ❖ Communication: MODBUS (RS485/RS232)
 - ❖ Cable Length: 3 Meter Standard (Max. 100 Meter as Optional)

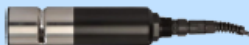
DISSOLVED OXYGEN ANALYSER



- ❖ Measuring Range : 0 to 2000 ppm
- ❖ Temperature : 50 °C
- ❖ Pressure: 1-20Bar
- ❖ Sensor Cable 10 Meter
- ❖ MOC: Foamed Noryl and SS316L
- ❖ Manual / Automatic Temperature Compensation



On Line COD/BOD/pH & TSS / Flow



COD/BOD/TOC Sensor



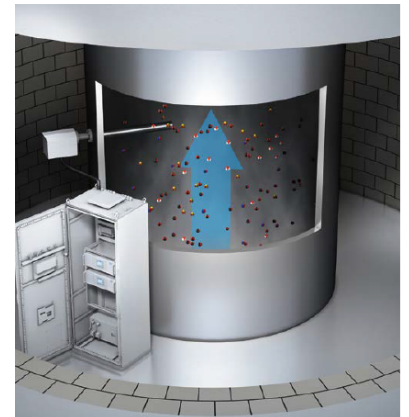
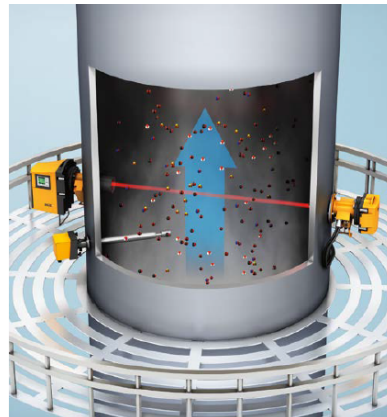
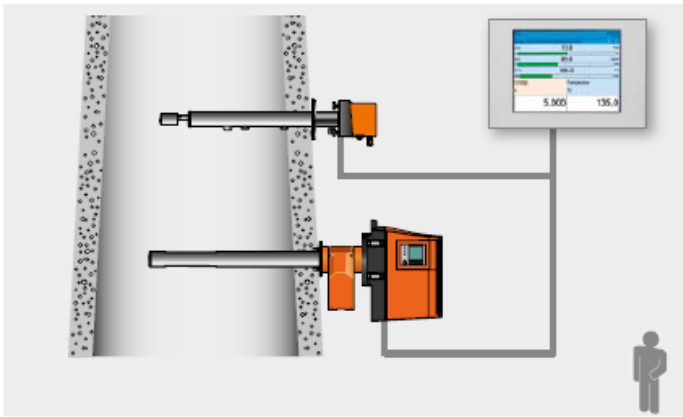
TSS/MLSS/Turbidity Sensor



pH/Temp/ORP Sensor



Chlorine



Terms/legends

- DCS - Distributed Control System
- ERP - Enterprise Resource Planning
- SICK MEAC - Measured Value Acquisition and Evaluation
- SOPAS - SICK Open Portal for Application Software

DUST MEASUREMENT



EXTRACTIVE GAS ANALYSER SYSTEM



AUTOMATION SYSTEMS



Measuring devices

For efficient and cost-effective system integration, the GMS800 product family has a standardized 19" housing or optimized system housing available for cabinet installation.



C
E
M
S

PROCESS & ENVIRONMENTAL ANALYSER SPARES

50 X 20 X 135 mm CERAMIC FILTER FOR PROBE



MOISTURE DETECTOR FILTER
CONDENSATE MONITOR UNIT



SAMPLE PROBE UNIT
RING HEATER UNIT



ANALYSER CART FILTER



GAS COOLER UNIT



PERISTALTIC PUMP



CONDENSATE VESSEL



SAMPLE GAS PUMP 360/540 LPH



ROTAMETER



AUTO DRAIN PUMP



PVDF FITTINGS



PTFE TUBES & FITTINGS



SOLENOID VALVES



PRE FABRICATED HEAT TRACE TUBE



BAM FILTER TAPE



THIMBLE FILTERS



M&C GAS COOLER



ABB URAS 26 CO DETECTOR



REFERENCE PUMP



GAST PUMP AAQMS



OUR CUSTOMERS:

ORIGIN INSTRUMENTS & ANALYTICS

CONTACT: 9693262635/ 9234704604

email: originservicesgrp@gmail.com

BRANCH OFFICES: ASSAM II W.B II DELHI II MUMBAI

CORPORATE OFFICE: JAMSHEDPUR

AN ISO 9001:2015 certified organisation





ORIGIN
INSTRUMENTS & ANALYTICS

Certificate of Registration

This is to Certify That The Quality Management System of

ORIGIN INSTRUMENTS AND ANALYTICS
A BLOCK, T1, LINE NO.2, TULADUNGBI, GOLUMBRI, JAMSHEDPUR, EAST SINGAPURUM, JHARKHAND - 831003, INDIA

has been assessed and found to conform to the requirements of

ISO 9001:2015
for the following scope:

SUPPLY AND SERVICES OF GAS ANALYSER SYSTEMS, SPARES AND PROCESS INSTRUMENTS

Certificate No: 24003R014
Initial Registration Date: 29/09/2020
Date of Expiry: 28/09/2023
1st Surve. Due: 29/09/2021
2nd Surve. Due: 29/09/2022

ISSUED BY:
ROHS Certification Pvt. Ltd.
ISO 9001:2015 Certified Body
101, Sector 16, Gurgaon, Haryana - 122001, India
Tel: +91 122 4109333, Fax: +91 122 4109334, Email: info@rohs-certification.com

IAF IAF 055-CB-046
eLAC

JDYAM REGISTRATION CERTIFICATE

OUR MISSION: To provide world class products and services to our customers.

TYPE OF CERTIFICATE	INDUSTRY	ACTIVITY
REGISTRATION CERTIFICATE	MANUFACTURING	POWER AND ENERGY
SCOPE OF CERTIFICATE	MANUFACTURING AND ANALYTICS	
ISSUE CATEGORY OF CERTIFICATE	General	
NAME OF ENDS	The Quality Management System	
DATE OF CERTIFICATE	29/09/2020	
DATE OF EXPIRY	28/09/2023	
DATE OF RE-EVALUATION	29/09/2021	
DATE OF RE-EVALUATION OF CERTIFICATE	29/09/2021	
DATE OF EXPIRY OF CERTIFICATE	28/09/2023	
DATE OF RE-EVALUATION OF CERTIFICATE	29/09/2021	

For any address, you may contact:
1. SDC, EAST SINGAPURUM
2. 2000230, BANGALORE

BE A CHAMPION with the Ministry of MSME

Ministry of Micro, Small and Medium Enterprises



GeM
Government e Marketplace
Efficient • Transparent • Inclusive



MAKE IN INDIA